

See what you are doing...



BIBLIOGRAPHY

[1] A. Katzera, H. Marquardt, J. Westendorf, J.V. Wening, G. von Foester.
Polyetheretherketone cytotoxicity and mutagenicity in vitro.
Biomaterials, 23: 1749-1759, 2002

[2] Karen B. Sagomonyants a, Marcus L. Jarman-Smith b, John N. Devine b,
Michael S. Aronow c, Gloria A. Gronowicz.
*The in vitro response of human osteoblasts to polyetheretherketone (PEEK)
substrates compared to commercially pure titanium.*
Biomaterials, 29(11): 1563-72, 2008

[3] C. Morrison, R. Macnair, C. MacDonald*, A. Wykmant, I. Goldie+ and M.H. Grant.
*In Vitro biocompatibility testing of polymers for orthopaedic implants using cultured
fibroblasts and osteoblasts.*
Biomaterials 16: 987-992, 1995

[4] Charles-H Rivard, Souad Rhalmi, Christine Coillard.
In vitro biocompatibility testing of peek polymer for a spinal implant system: A study in rabbit.
Wiley Periodicals 2002

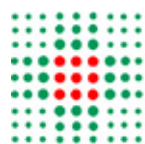
[5] Steven M. Kurtza, John N. Devinec.
PEEK biomaterials in trauma, orthopedic, and spinal implants.
Biomaterials, 28(32): 4845-4869, 2007



Hit Medica S.p.A.

Strada Borrana, 38
47899 Serravalle
Repubblica di San Marino
Tel. +378 0549.961911
Fax. +378 0549.961912
info.trauma@limacorporate.com

In collaboration with:

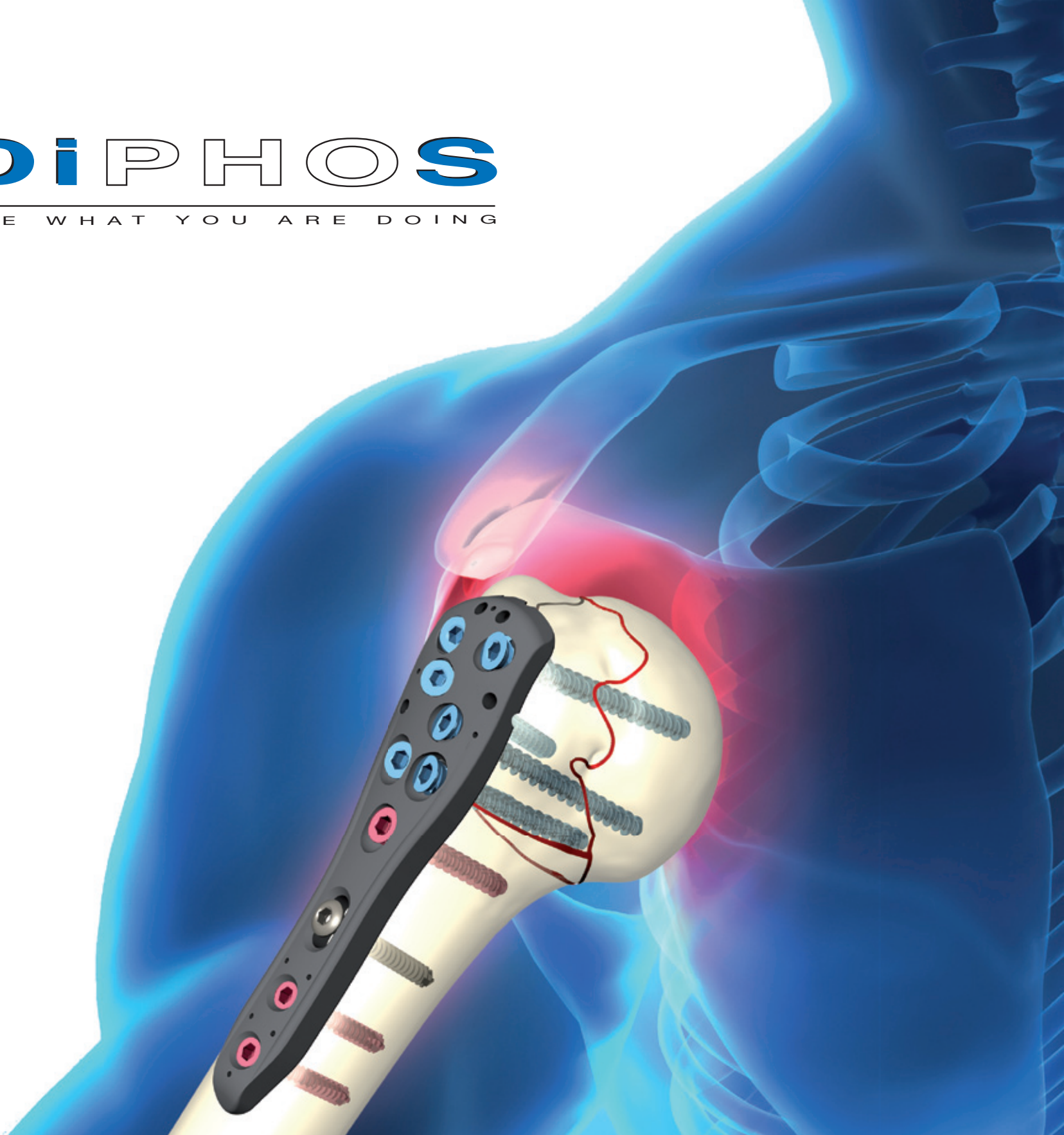


**SERVIZIO SANITARIO REGIONALE
EMILIA - ROMAGNA**
Istituto Ortopedico Rizzoli di Bologna
Istituto di Ricovero e Cura a Carattere Scientifico



DiPHOS

SEE WHAT YOU ARE DOING





Thanks to its unique design and innovative material (CFR PEEK 30%) the DiPhos Plates makes a difficult job easy: translucency and polyaxial locked self-tapping screws allow secure intraoperative reconstruction and an effective evaluation of fracture healing. Peek + Titanium means you control screw removal.

BENEFITS



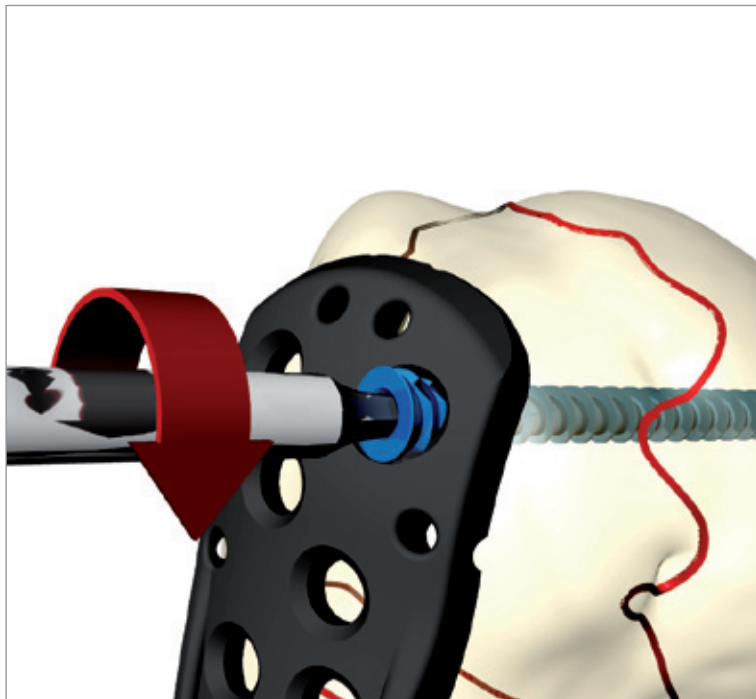
DiPhos H



DiPhos R

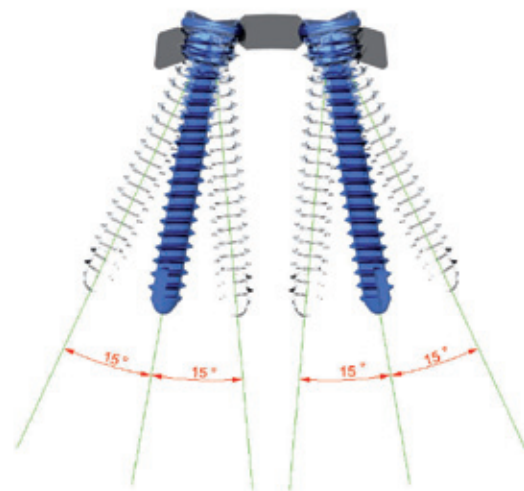
TRANSLUCENCY

Better visualization of fragment reduction, easier follow up of the healing process



POLYAXIAL SELF-TAPPING SCREWS

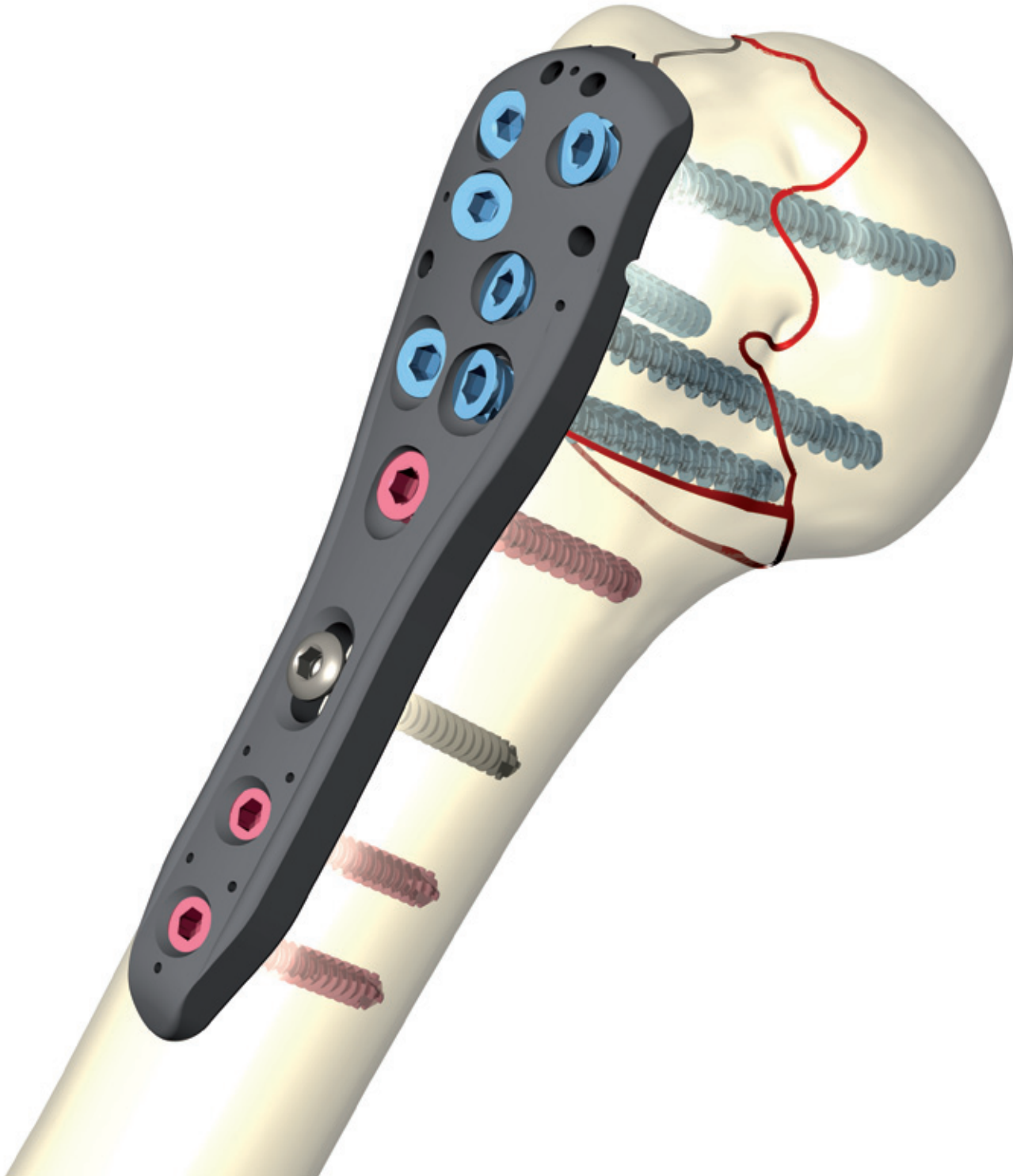
Insertion of the screws along the clinically ideal axis



BENEFITS

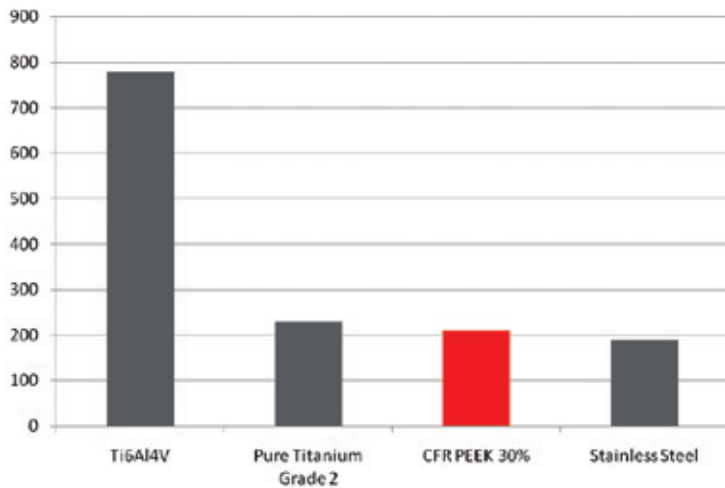
EASIER REMOVAL

CFR Peek 30% is an inert material.
No galvanic corrosion between screw and plate



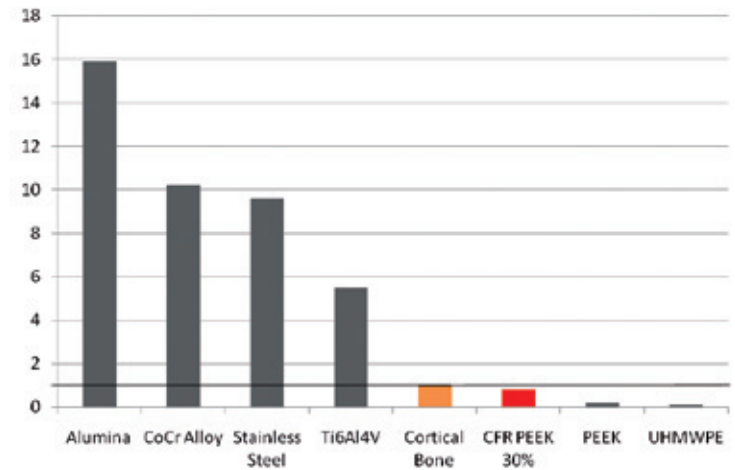
BIOMECHANICAL VALIDATION

BENDING STRENGTH



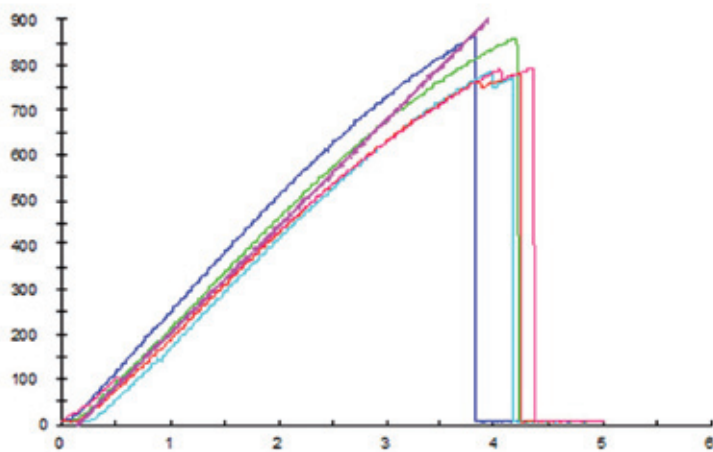
Very close to stainless steel: mechanical resistance comparable to the most commonly used material in trauma

ELASTIC MODULUS NORMALISED AT CORTICAL BONE



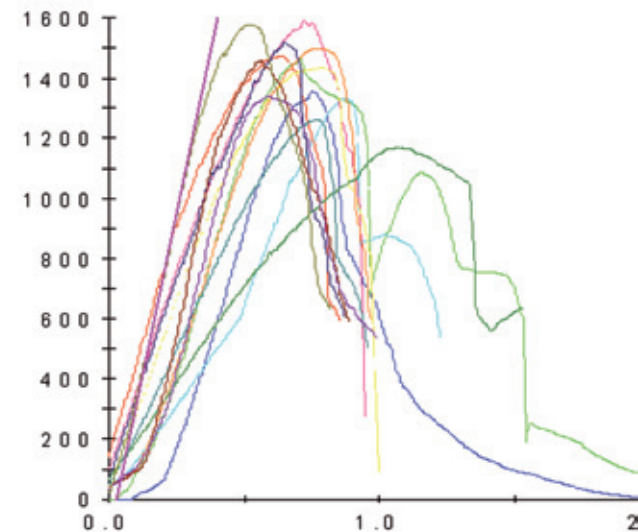
Peek vs cortical bone: comparable behaviour in load transfer, thus easier healing process

FOUR POINT STATIC BENDING TEST



Breakage occurs at more than 800 N, extremely safe in the post-operative rehabilitation process

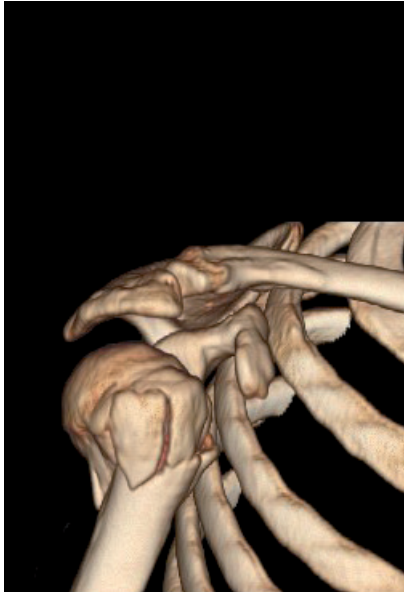
PUSH OUT TEST



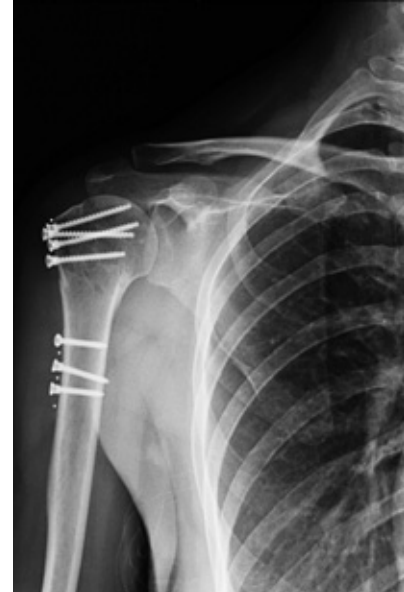
Up to 3 possible consecutive insertions with different axis; screw disassembling occurs at more than 1200 N

CLINICAL CASES

DiPhos H



PRE-OP TAC RECONSTRUCTION



A/P FOLLOW UP AT 5 MONTHS

DiPhos R



A/P PRE-OP



A/P FOLLOW UP AT 3 WEEKS